



COMMERCIAL SERVICES

INSURING COMMERCIAL PROPERTIES THROUGHOUT NEW ENGLAND

Commercial real estate transactions represent an important opportunity for your practice. However, they can also bring challenging legal complexities, aggressive deadlines and countless details.

For more than 50 years, CATIC® has set the standard of quality for title insurance services. Whether you are dealing with an industrial park or class “A” office space, we have the experience and expertise to help you meet the unique challenges of commercial transactions. Also, through a strategic alliance with Lloyds of London, CATIC has the ability to underwrite commercial transactions of all sizes.

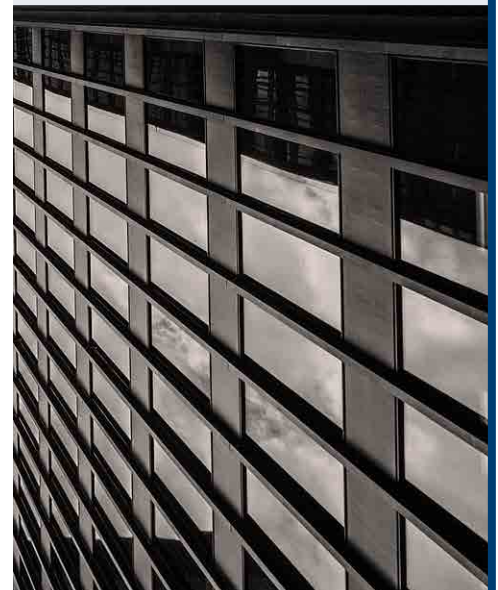
COMMERCIAL SERVICES:

- Knowledgeable underwriting counsel, experienced in all facets of commercial transactions, available to make prompt risk decisions, review closing documents and attend a closing if needed.
- Preparation and/or review of title insurance commitments and/or policy upon request.
- Customized commercial endorsements.
- Escrow services including holding purchase and sale deposits in secure accounts, handling wire transfers and disbursement of closing funds, organizing closing documents and disbursing them to appropriate parties.

THE FOLLOWING ARE AVAILABLE ONLY IN CT AND RI:

- Comprehensive title searches and bringdowns as well as UCC, DEP, Bankruptcy, Foreclosure and Federal District Court searches.
- Assistance in obtaining Certificates of Legal Existence, Certificates of Incorporation, Articles of Organization and copies of corporate documents.
- Post Closing Recording services.

In business for more than 50 years, CATIC is dedicated to providing high-quality professional services to our policy-issuing attorneys, insured lenders and home-buyers, and other members of the real estate community throughout New England.



**For More Information about
Commercial Search Pricing,
please contact your local
CATIC office.**

www.CATIC.com (800) 842-2216

CONNECTICUT

MAINE

MASSACHUSETTS

NEW HAMPSHIRE

RHODE ISLAND

VERMONT